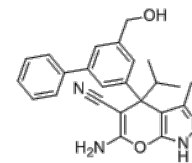


Product Name : SHIN1
Cat. No. : PC-38151
CAS No. : 2146095-85-2
Molecular Formula : C₂₄H₂₄N₄O₂
Molecular Weight : 400.482
Target : Histone Methyltransferase (HMTase)
Solubility : 100 mM in DMSO (40.1 mg/mL)



Biological Activity

SHIN1 (RZ-2994, RZ 2994) is a folate-competitive, cell-permeable inhibitor of human **SHMT1/2** with biochemical IC₅₀ of 5/13 nM.

SHIN1 blocked growth of HCT-116 cells IC₅₀=870 nM, SHIN1 impairs cell growth at concentrations <100 nM due to its potent engagement of cellular SHMT1. SHMT inhibition in DLBCL cell lines results in depletion of glycine-derived metabolic products.

References

Juan C García-Cañaveras, et al. Leukemia. 2021 Feb;35(2):377-388.

Gregory S Ducker, et al. Proc Natl Acad Sci U S A. 2017 Oct 24;114(43):11404-11409.

Pikman Y, et al. Leukemia. 2022 Feb;36(2):348-360.

Caution: Product has not been fully validated for medical applications. Lab Use Only!

E-mail: tech@probechem.com